

Virtual Fireside with Minister Desmond Lee

*“Emerging Greener, Stronger, and more United:
Transitioning to Smart Living with a Sustainable and Resilient Future”*



Outline

- Environmental Sustainability: City in Nature
- Social Sustainability: Social Services Integration

Environmental Sustainability

The Singapore Green Plan 2030

Working together with all Singaporeans to tackle climate change

A



CITY IN NATURE

Create a green, liveable, and sustainable home for Singaporeans

B



ENERGY RESET

Use cleaner energy, increase our energy efficiency to lower our carbon footprint.

C



SUSTAINABLE LIVING

Reduce carbon emissions, keep our environment clean, save resources and energy

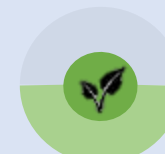
D



GREEN ECONOMY

Seek green growth to create new jobs, transform our industries.

E



RESILIENT FUTURE

Build up Singapore's climate defences and resilience, and enhance our food security.

Our efforts to green Singapore have evolved over the years.

Garden City

City in a Garden

City in Nature



East Coast Park



Tanglin Nature Way

Photos: NParks

The Singapore Green Plan 2030



City in Nature

Create a Green, Liveable
and Sustainable Home
for Singaporeans

- Plant 1 million more trees, and have every household within a 10-minute walk from a park by 2030
- Develop over 130 ha of new parks, and enhance around 170 ha of existing parks with more lush vegetation and natural landscapes by end-2026
- Add 1000ha of green spaces by 2035



Transforming into a City in Nature

Weaving nature into our city, and naturalising the urban environment



Bidadari estate integrates elements of nature within residential developments



Examples of nature-based solutions at **Rasau Walk at Lakeside Garden**, **Jurong Lake Gardens** (middle), and **Bishan-Toa Payoh Park** (right)



Transforming into a City in Nature

Types of habitats that can be found in our four nature reserves

Bukit Timah
Nature Reserve



Labrador
Nature Reserve



Central
Catchment
Nature Reserve
(Nee Soon
Swamp Forest)
Photo: Wong Tuan Wah

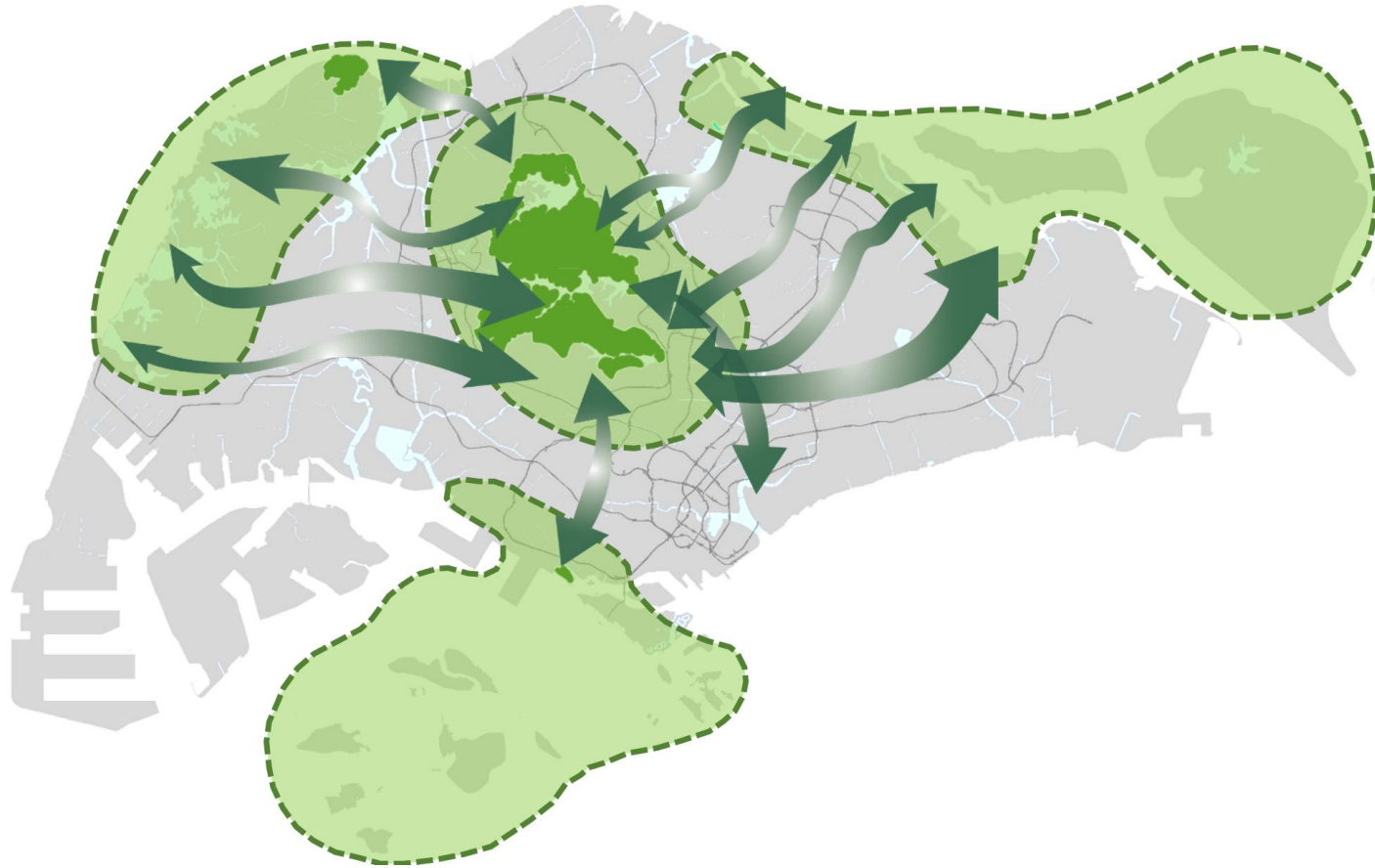


Sungei Buloh
Wetland
Reserve



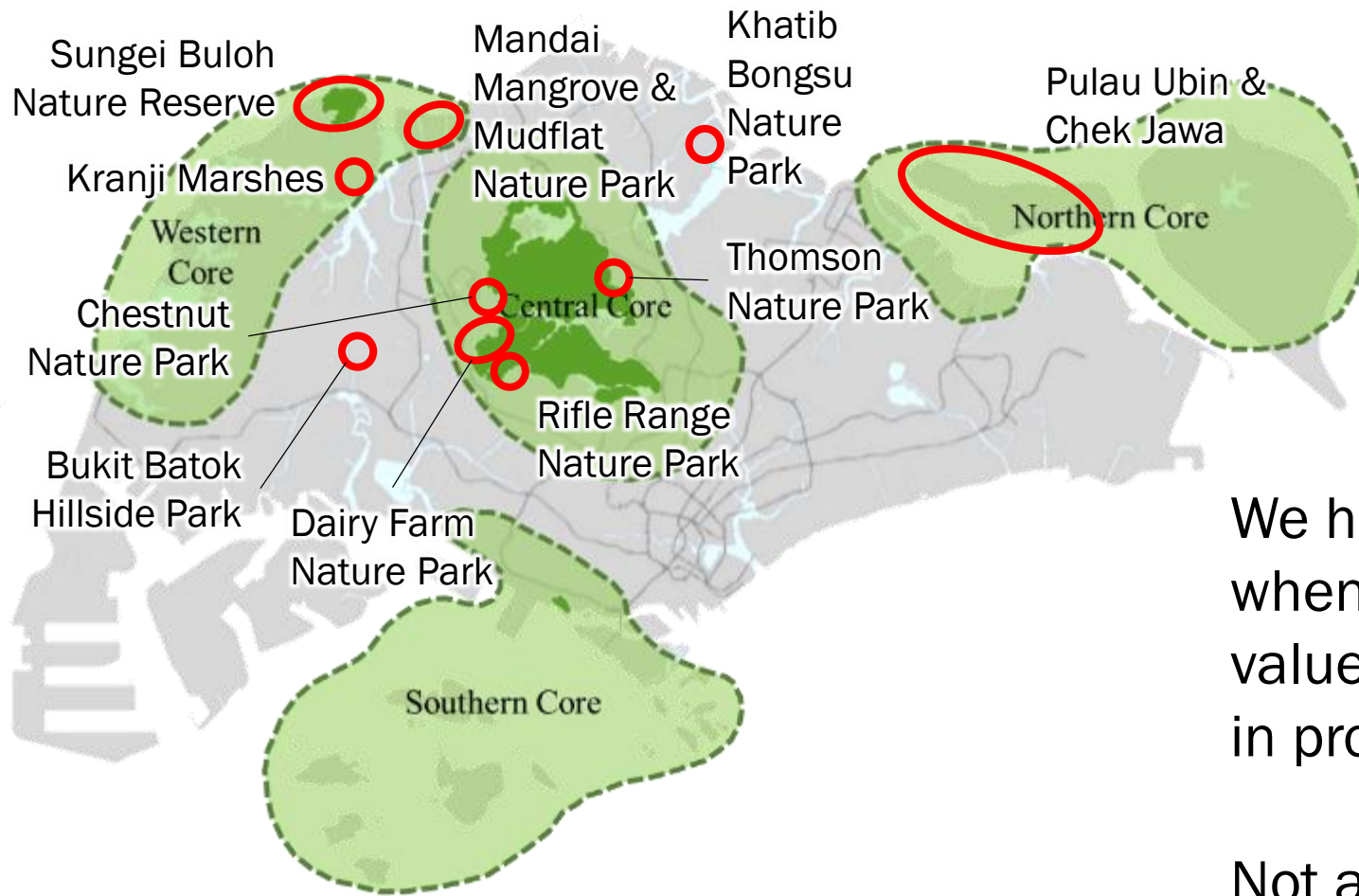
Taking a Science-based Approach to Nature Conservation

We are enhancing ecological connectivity across our island,
to help native flora and fauna to thrive



Map of ecological connectivity between core areas

Taking a Science-based Approach to Nature Conservation



Biodiversity-rich core areas

We have revised plans to develop sites, when we found they had high ecological value – e.g. as habitat for biodiversity or in providing ecological connectivity

Not all were untouched habitats – some were abandoned, and later became green spaces

Taking a Science-based Approach to Nature Conservation



Tree-planting as part of habitat restoration
Photo: NParks



Cinnamon Bush
Frog and modified
natural phytotelma
that NParks
created for them.

Photos: Daniel Ng



Species Recovery Working Groups

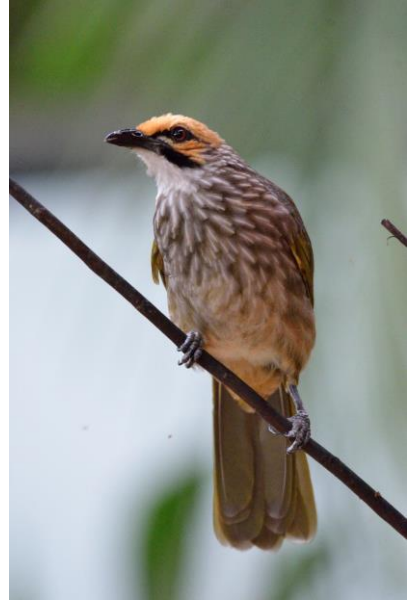


Singapore
Freshwater Crab
(*Johora
singaporensis*)

Photos: NParks



Straw-headed bulbul
Photo: NParks



Sunda Pangolin
Photo: NParks

Planning for our Long-Term Needs



As a city and a country, we need to meet all the needs of a country within our city limits

Including facilities that larger countries can afford to place far away from their cities

We need to plan and stage development carefully so that we can meet our people's needs, both today and in the future

Various strategies to make the best use of land

We **intensify** land use by building taller buildings, closer together



High-rise industrial developments
e.g. JTC Space @ Tampines North



Transport
East Coast 4-in-1
rail and bus depot



Community facilities
Our Tampines Hub

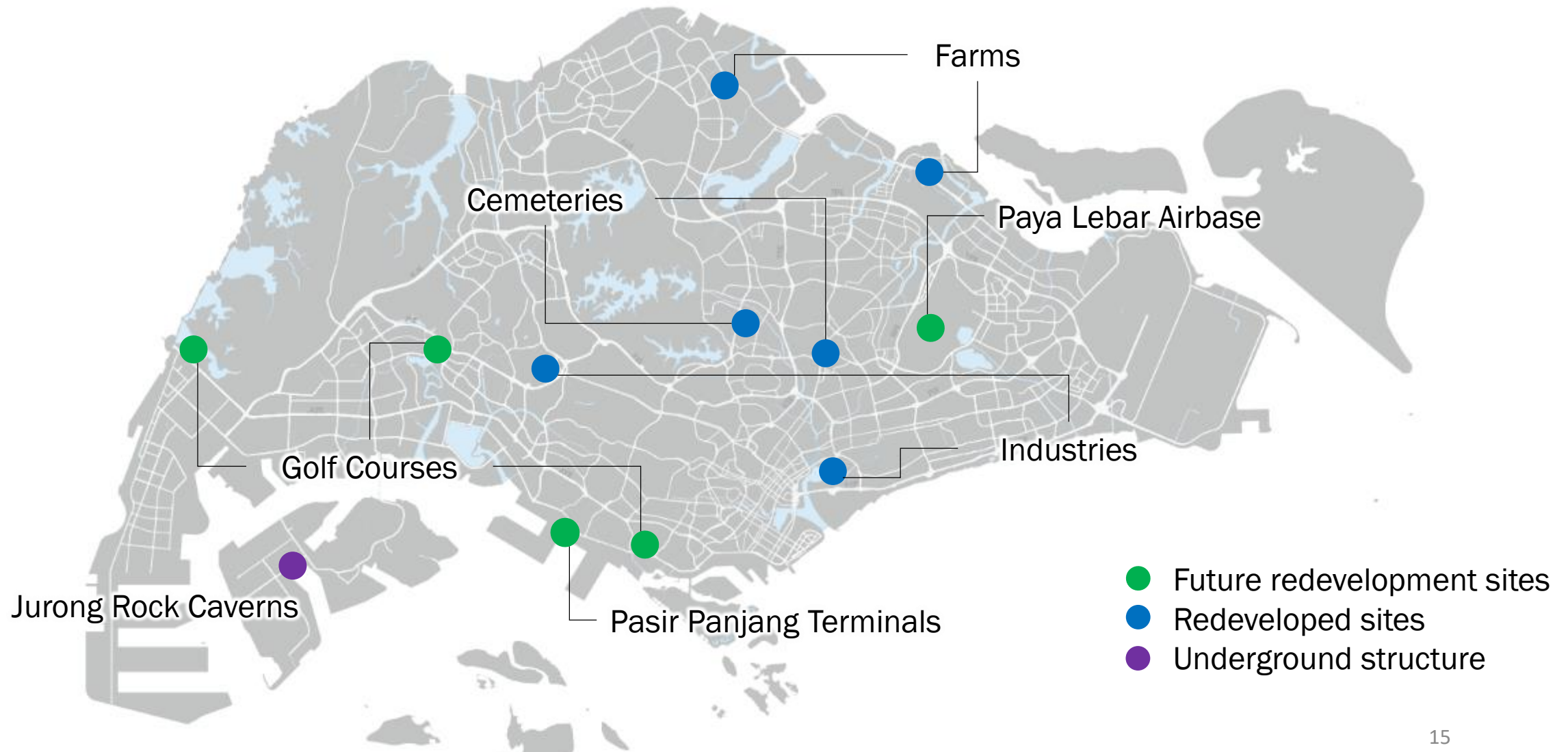
We **co-locate** different but compatible facilities



Utilities
Tuas Nexus waste-to-energy facility

Various strategies to make the best use of land

We **redevelop** brownfield sites for new and higher-intensity uses, and even go **underground**.



Balancing development and conservation

Where we have to develop a greenfield site, we study and **mitigate** the potential environmental impact

We **consult** deeply for sites near sensitive nature areas, and may subject certain sites to **additional environmental studies**



Sungei Buloh Wetland Reserve

The Singapore Green Plan 2030

You too can participate!

**Contribute to the
OneMillionTrees movement**



<https://www.nparks.gov.sg/treessg/contribute>

**Get involved in the Friends
of the Parks initiative**



<https://www.nparks.gov.sg/partner-us/volunteer/friends-of-the-parks>

**Share your ideas for the
Singapore Green Plan 2030**



<https://form.gov.sg/#!/6013d365bedd790011bb9c86>

Social Sustainability

Transforming our Social Safety Nets

Our approach to social safety nets has evolved over time

Early Years:
Prioritised
meeting basic
needs



Building a viable and competitive economy



Providing housing

1990s-2000s:
Greater focus
towards those
who had less



Providing education

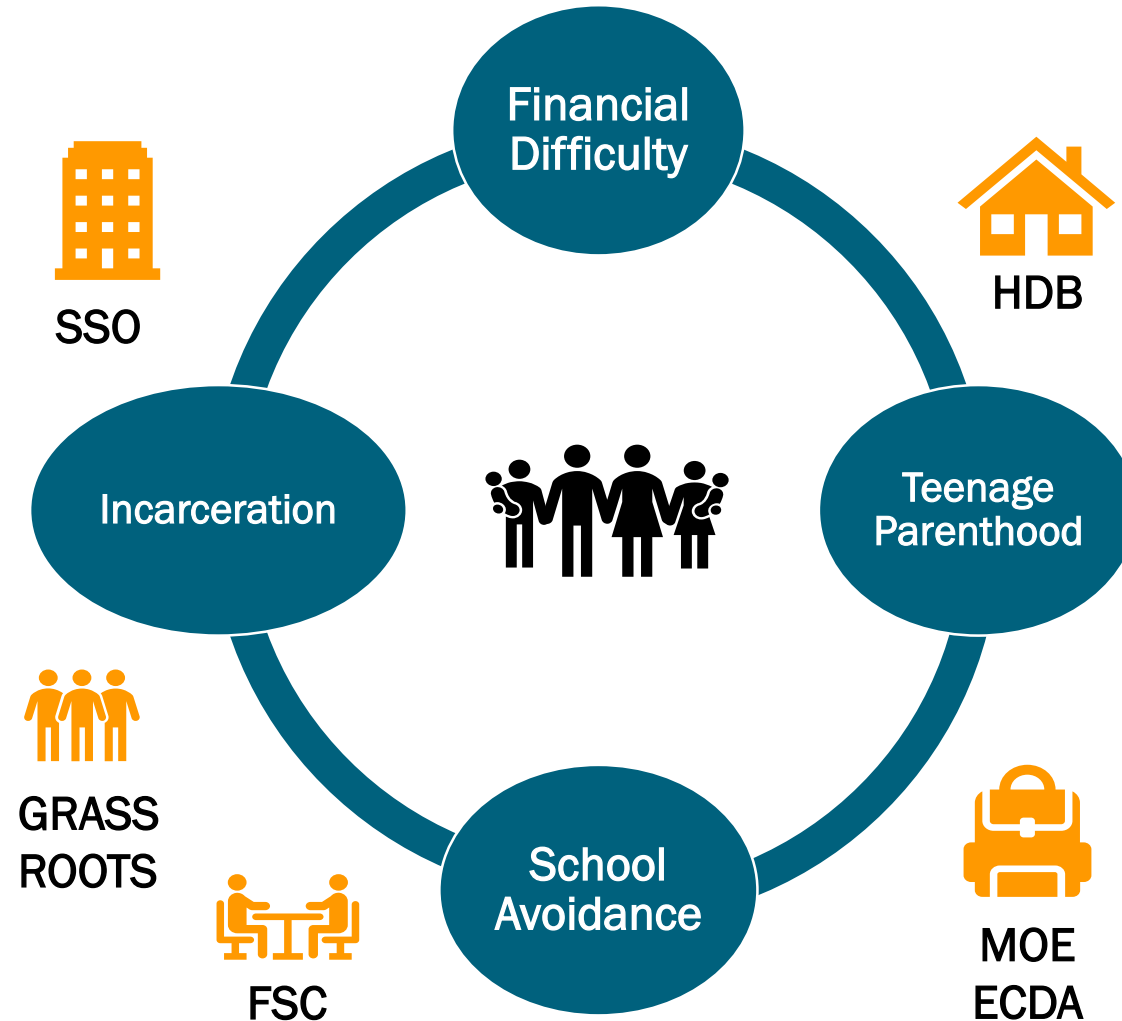
Today
Strengthening
People, Public
and Private
Partnerships

*"Today, the situation has changed. **If we rely too heavily on the individual, their efforts alone will not be enough, especially among the vulnerable** like the low-income families, like the elderly. And there are some things which individuals cannot do on their own and there are other things which we can do much better together. **So we must shift the balance. The community and the Government will have to do more to support individuals...**"*

PM Lee Hsien Loong
National Day Rally 2013

Transforming our Social Safety Nets

Some families still face complex, inter-locking challenges that make it very hard for them to improve their situation



Transforming our Social Safety Nets

Our flagship initiative ComLink embodies our new model

For families with young children living in public rental housing
Piloted in four towns, now extending to all 14,000 such families islandwide

Deeper integration across agencies: family-centric help

Proactively reach out to families and pool data across agencies to understand their needs

Use common IT platforms to share data across agencies, coordinate on cases, and develop common action plans

Galvanise community to provide tailored programmes and services, with clear knowledge of who will benefit



Transforming our Social Safety Nets

**New approach that has no international precedent
We have to learn and adjust along the way**

**Comprehensive and
targeted support**

**Integrate services
for convenience**



**Coordination
across agencies
and community
groups**

We have other community partnerships

Supporting our rough sleepers



PEERS Network

Sheltered about 900 rough sleepers since April 2020, befriend and understand their needs

Supporting those with food needs



Charity food workgroup

Ensured essential food aid continued during COVID-19 pandemic, coordinate to reduce food waste

Extend your help

MSF can serve as the “EDB of giving”

To get donors, corporates, volunteers to contribute:

- Funding / in-kind donations,
- Skills & services in their areas of expertise, or
- Time to journey with families in need.

We seek your strong support

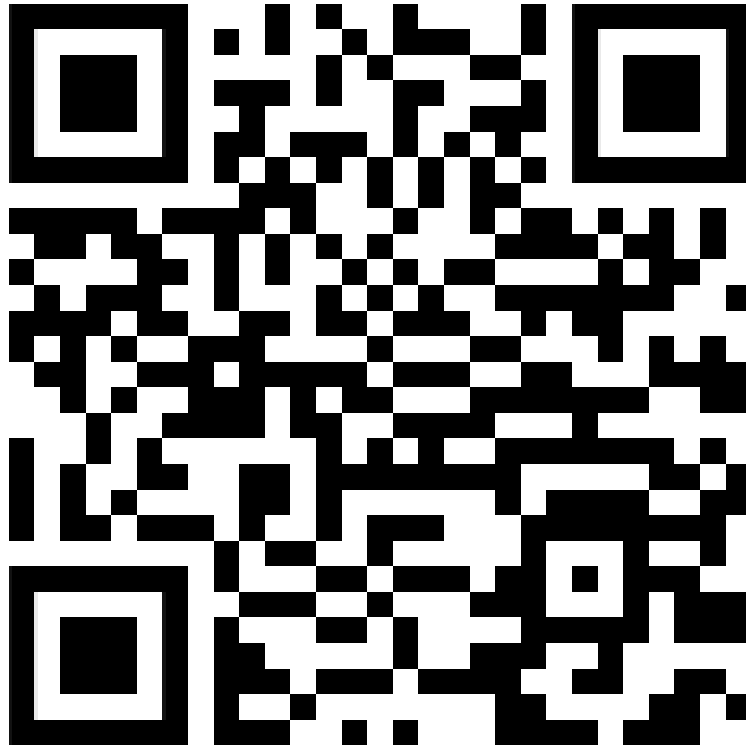
Sign up for one of our initiatives, or join the SG Cares Community Network in your town.

You can contribute in your own capacity, or tap on your extensive networks to provide support



Contributing to the Community

Sign up as a volunteer!



Thank you